

3D Force Button Sensor Development Kit (Beta)

Giving devices a human **sense of touch**

Add a sense of touch to your device and measure:

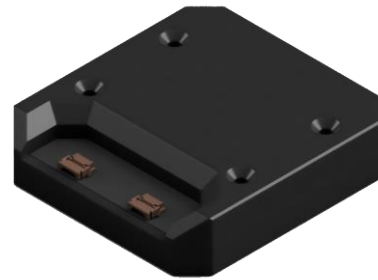
- 3D force from an applied load
- Rate of change of 3D forces over time
- Force thresholds to trigger appropriate action
- Contact and/or touch

3D force sensing for any **application**

This sensor can be used in robotic and prosthetic grippers, robotic feet, gloves for augmented reality training, rehabilitation tools, exoskeletons, gaming controllers and much more!



Sensor



Adapter *



Controller **

Force Sensing (N)

	X, Y	Z
Option 1		
Range	±4	0 - 4
Resolution	< ±0.005	< ±0.005
Option 2		
Range	±8	0 - 8
Resolution	< ±0.01	< ±0.01
Option 3		
Range	±12	0 - 20
Resolution	< ±0.02	< ±0.02

Dimensions (mm)

W x L x H 14 x 19 x 9.3

Mounting

2x M2 tapped screw holes

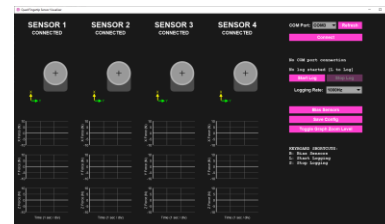
- * Connect up to 2 sensors to each adaptor
- ** Connect up to 2 adaptors to each controller

Dimensions

(W x L x H mm) 65 x 70 x 16.5

Mounting

4x M3 mounting holes



Dashboard

Operating System

Windows

Purpose

- Display 3D force of each connected sensor
- Log data to CSV file

Dimensions

(W x L x H mm) 49 x 38 x 24.5

Mounting

4x M3 threaded screw holes

Data Interface

Interface	USB
Sampling Rate (Hz)	1000

C++ API

Operating System

Linux, Windows

Purpose

- Integration into user application software
- Log data to CSV file

contactile

info@contactile.com | www.contractile.com